

Double-walled pipe system in a water protection area

SECON®-X Petrol station piping for the newbuilding
of a motorway service area in Bremerhaven-Wulsdorf



Henry Reepschläger,
TIN GmbH, Weyhe

„The endless, flexible SECON®-X pipe system from BRUGG can be laid easily and incredibly fast. We laid the piping for this motorway service area in a water reserve with more than five hundred metres of SECON®-X in almost no time at all – and complied with all the quality requirements.“

Following the decision of the investor, work began on erecting a new motorway service area next to the Autobahn A 27 at the exit Bremerhaven-Wulsdorf. The planning for this project was done in close cooperation with Shell Deutschland Oil GmbH. They set the quality standards for the realization of the plant.

The new building is in a designated water protection reserve, so that it was compulsory to use double-walled and leak-monitored piping for carrying the fuel. The Office of Environmental Protection in the port of Bremerhaven was particularly concerned that double-walled petrol station piping should be used on the premises of the service area. BRUGG cooperated with the professional planners and the architects' office to draw up a project design for a double-walled piping network. All the requirements according to water Law and Environmental Protection Law needed to be complied with in this.



Laying the filling pipes directly off the drum

Thanks to SECON®-X's "General technical approval", all legal requirements for underground piping for the transport of environmentally hazardous substances were complied with one hundred percent. The system is double-walled and can be permanently monitored. Double-walled safety piping is compulsory not only for automotive fuels such as diesel and high-octane petrol, but also for the underground transport of carbamide in solution (AdBlue). Modern fuels such as E10 or biodiesel can be optimally transported in the chemically resistant stainless steel inner pipe too.



Bending the pipe

Solutions for the future

SECON®-X Petrol station piping for the newbuilding of a motorway service area in Bremerhaven-Wulsdorf

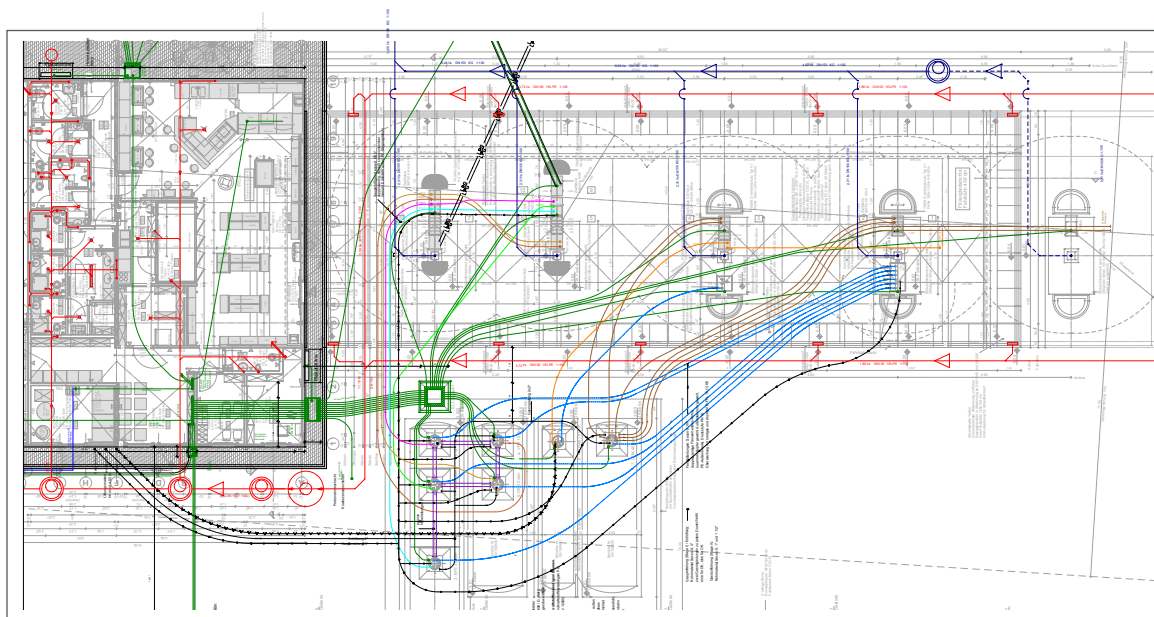
We score by the rapidly laying of SECON®-X. This convinced Inspectors of government on site.

It is possible In case of allowance of using the SECON®-X as single walled pipe system.

Optional – if necessary later – it's the possibility to integrate the pipe system in leak detection. This will be a very interesting detail for Fill pipes, Suction pipes and as well for vapor recovering lines stage I and stage II.



Double walled SECON®-X Tee piece



Plan view
Fuelling station
SHELL
motorway
service area

To contact us and for further information, please fill in the following details and send them by fax to +49 (0)5031 170-170.

- Please send me detailed information material
 I have a project I am currently working on and would like to speak to you personally

Sender

Company:

Contact person:

Telephone:

eMail:

Street/No.:

Postcode/Town:

BRUGG Rohrsysteme GmbH

Adolf-Oesterheld-Straße 31

D-31515 Wunstorf

phone +49 (0)5031 170-0

fax +49 (0)5031 170-170

info.brg@brugg.com

www.brugg.de

Company stamp