

FLEXWELL® Safety Pipe for the emergency power generators of the Federal Press Office Berlin



To keep the information hub turning reliably ...



„Thanks to the great flexibility of the FLEXWELL® Safety Pipe we were able to lay the entire pipe system in one continuous line. It proved possible to master the difficult routing with no problems at all thanks to the flexibility of the piping.“

Michael Rutz, Managing Director
CERES Energieanlagen GmbH

The “emergency power incident” means the maintenance of a continuous electrical power supply by means of emergency generators when a power blackout occurs. Emergency generators can be deployed everywhere where the loss of mains power can have grave consequences – such as in hospitals, chemical plants, server rooms and last but not least in public administration premises at all levels, so that the state retains its ability to act.

As a rule these emergency generators are installed on the roofs of buildings and need a day tank. This day tank is located close to the emergency generator and must be kept constantly topped up. The day tank is supplied by a storage tank usually installed in the basement or underground. The connection between storage tank and day tank is often made using FLEXWELL® Safety Pipe, which has proven itself over decades of service in this application. Thanks to the double-walled construction of the safety piping all legal requirements and fire protection standards are fulfilled.



Laying the FLEXWELL® Safety Pipe on the roof.

Compliance with regulations such as R90 and R120 is achieved by using specialized pipe lead-through technology.

In the Federal Press Office in Berlin, 80 m of FLEXWELL® Safety Pipe FSR-M 16/30 were laid. This formed the connection between the day tank on the roof and the storage tank in the basement. The piping was laid horizontally in one piece on the roof, led down vertically into the inner courtyard and from there horizontally through the courtyard and several basement rooms to the storage tank. Laying took only a very short time – the complete piping was installed in less than one day and put into operation within hours.



Applying a fire-retarding seal to the FLEXWELL® Safety Pipe with an approved specification fire safety wall duct.



Simple fixing of the FLEXWELL® Safety Pipe with system technology (anchor and cable saddle brackets).



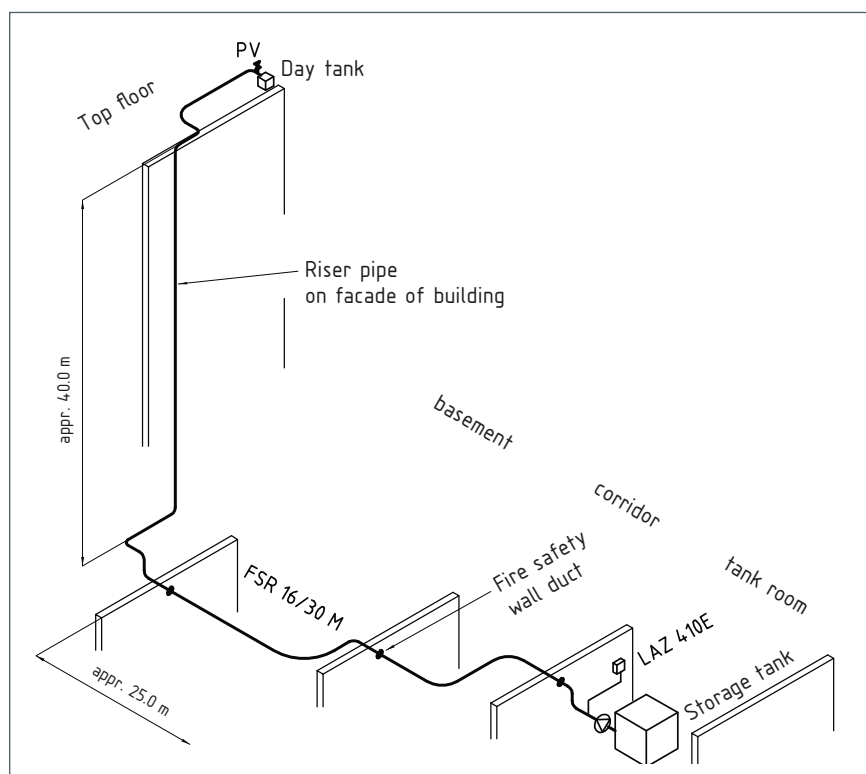
Thanks to its excellent flexibility the FLEXWELL® Safety Pipe can be laid with ease across the roof, changing direction several times.

Solutions for the future

To keep the information hub turning reliably ...

In a nutshell:

BRUGG FLEXWELL® Safety Pipe is ideally suited for the transport of diesel fuel within buildings. On the one side it is characterized by very fast and easy laying while on the other side it complies with all necessary legal requirements such as WHG, TRbF, MALR, VUmwS.



Routing of the FLEXWELL Safety Pipe® from the storage to the day tank.

For contact and further information please fill out this section and send it to Fax +49 (0)5031 170-170.

- Please send me full information material
 I have a project currently in hand and would like you to contact me

Sender

Company: _____

Contact person: _____

Telephone: _____

eMail: _____

Street/No.: _____

Postcode/Town: _____

Company stamp

BRUGG Rohrsysteme GmbH

Adolf-Oesterheld-Straße 31

D-31515 Wunstorf

phone +49 (0)5031 170-0

fax +49 (0)5031 170-170

info.brg@brugg.com

www.brugg.de

A company of the BRUGG Group